

**SINGLE  
SOURCE  
FOR  
SUBSEA  
SOLUTIONS**



## | SAFETY FOCUS

C-Innovation prides itself on maintaining the highest possible standards of health, safety and environmental sensitivity.

In each QHSE area, we strive to uphold, comply with, but ultimately exceed industry standards.

Overarching our full breadth of operations, the C-Innovation team is collectively committed to guaranteeing the continual improvement of quality, health, safety and environmental impacts.

Through the careful establishment of objectives and targets, our QHSE goals are consistently monitored and maintained through managed workplace visits, continual review of safe work practices, ongoing safety training and effective employee incentive programs.



# C-INNOVATION

## The Single Source for Subsea Solutions

C-Innovation, LLC, an affiliate of Edison Chouest Offshore (ECO) and its family of companies, was founded in 2007 to meet the rising demand for advanced ROV operations in the Gulf of Mexico. After years of strategic growth, C-Innovation has evolved into a highly diverse, integrated marine services company, specializing in delivering advanced turnkey subsea solutions to major marine oil and gas operators around the globe.

Operating at the leading edge of subsea innovation, our highly trained and experienced personnel harness our state-of-the-art subsea equipment to conquer some of the world's most complex engineering, project management and subsea field development challenges. By maintaining an ISO 9001 certification, our clients can be assured that C-Innovation's quality surpasses current industry requirements, and that safety is at the forefront of everything we do.

C-Innovation puts a continued focus on safety, operating a training center at its Mandeville facility, providing ROV launch, recovery and pilot training and well as back of the boat training to ensure safe work operations offshore.

## I ROV SERVICES

As the largest owner and operator of Schilling Robotics ROVs, C-Innovation is quite simply the world leader in ROV systems for the oil and gas industry.



### Schilling Robotics Heavy Duty (HD) Work Class ROV

HP: 150

Depth Rated: 3,000 m

Payload: 551 lbs

- Leads the industry in reliability and performance
- Small design requires less deck space
- Ideal for tasks in tight spaces
- Modular design decreases maintenance time by a factor of 6-to-1



### Schilling Robotics Ultra Heavy Duty (UHD) GEN I & II Work Class ROV

HP: 200

Depth Rated: 4,000 m

Payload: 661 lbs

- Closed loop controls provide precision operation
- Inertial Navigation System (INS) for precise navigation positioning
- Optimized for ROV operations in extreme situations
- Real-time diagnostics



### Schilling Robotics Ultra Heavy Duty (UHD) GEN III Work Class ROV

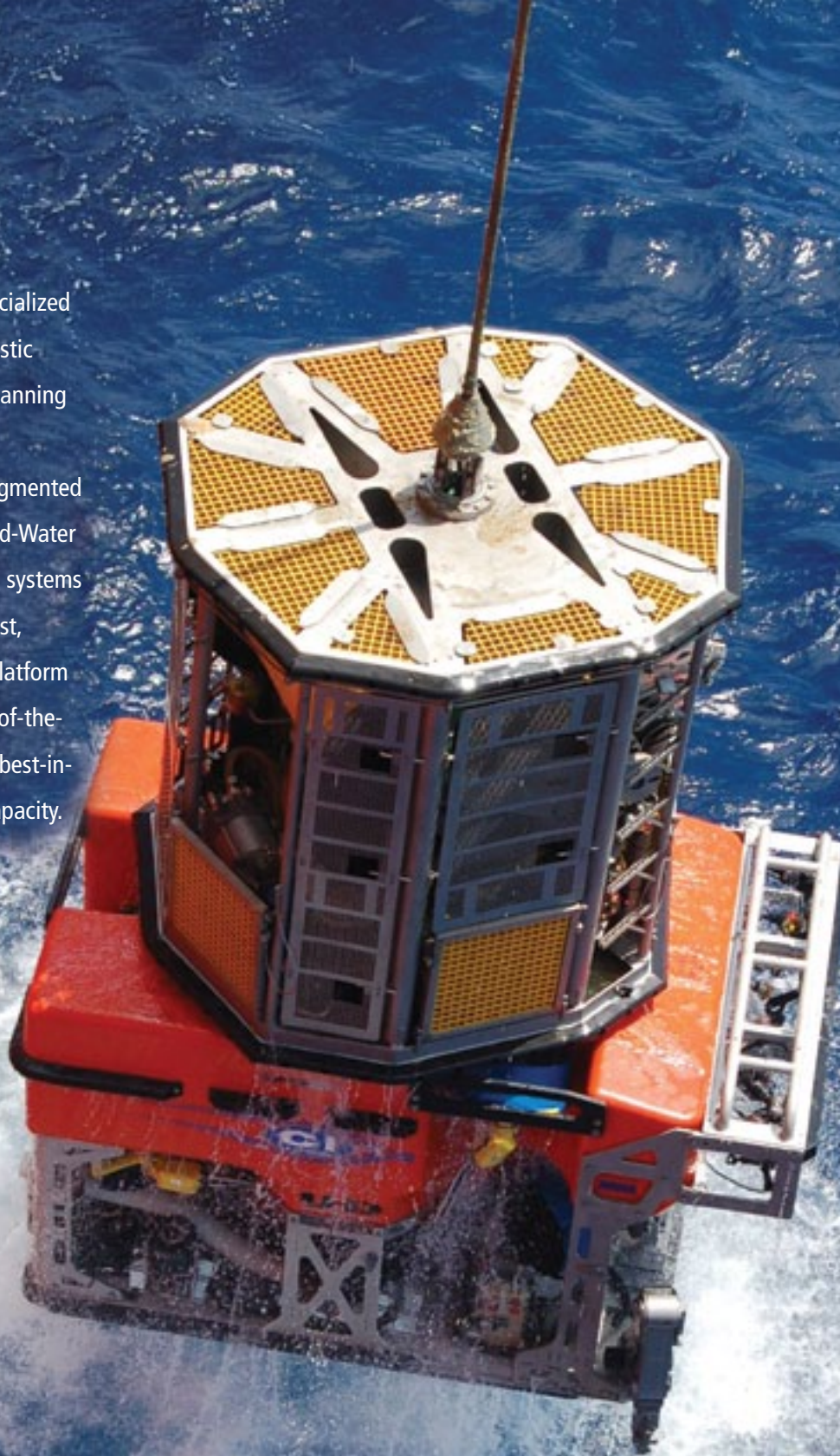
HP: 250

Depth Rated: 4,000 m

Payload: 992 lbs

- ISOL-8 pump provides up to 150 hp for fluid intervention needs
- Ability to pump two separate fluids simultaneously
- API 53 compliant for BOP functioning
- Reduced maintenance, replacement and repair time
- Integrated HD video system over Ethernet
- Advanced thruster performance

Our highly specialized remote diagnostic and mission-planning software and proprietary Augmented Reality and Mid-Water StationKeep™ systems provide a robust, system-wide platform utilizing state-of-the-art ROVs with best-in-class sensor capacity.



## | SUBSEA SERVICES

C-Innovation, LLC formed a turnkey Subsea Projects Group to provide a complete subsea solution to its global customer base.

### **Engineering**

C-Innovation's engineering team incorporates operational knowledge to research, plan, develop and implement complex technical solutions to solve subsea challenges worldwide.

### **Construction & IMR**

Committed to life-of-field services, C-Innovation offers construction and IMR support packages for infrastructure and pipeline operations – including subsea installation; platform, hull and pipeline inspection; tooling repair; and component replacement.

### **Drilling Support**

Utilizing a robust ROV fleet, C-Innovation provides advanced BOP intervention solutions to customers, including safely and quickly closing rams and safety valves, ensuring production stays on course.

### **Cutting**

From cutting, collection and debris removal, C-Innovations offers a decommissioning solution for platforms, risers, pipelines and more.

### **Well Services**

With access to strategic aligned partners, C-Innovation offers well services ranging from hydrate remediation to acid stimulation.

And, with access to an industry-leading inventory of mission-specific vessels, we can match and schedule assets to save our clients valuable time and resources.



Based in Houston, USA, our Subsea Projects Group provides engineering support, procedural development and review, project execution and final reporting requirements.



## | VESSEL SERVICES

Integrating ROV and vessel support services, C-Innovation offers a turnkey subsea solution.

As a member of the Edison Chouest Offshore group of companies (ECO), our customers have access to a vast vessel fleet, floatel accommodations, multiple shipyards, expansive port facilities and cutting-edge logistics and communications services. Our mission-specific vessels are designed for a range of challenges:

- Offshore construction
- Subsea construction
- Well intervention
- Anchor handling
- Towing
- Platform supply
- Tugs
- Multi-purpose vessels
- Floatels



### Vessels Include:

- M/V Kirt Chouest
- M/V Holiday
- M/V C-Installer
- M/V Dove
- M/V Island Enforcer
- M/V Island Intervention
- M/V Island Performer
- M/V Island Venture
- M/V Joshua Chouest
- M/V Dino Chouest
- M/V Brad Dartez



The M/V Island Intervention is a highly advanced, multifunctional vessel built to perform well intervention, subsea construction, IMR and ROV services.



# | SURVEY & POSITIONING SERVICES

C-Survey uses cutting-edge technology to provide accurate subsea measurement and state-of-the-art positioning services.

## C-Survey can be used for:

- Survey project design
- Surface navigation
- Subsea ROV positioning
- Decimeter subsea LBL positioning
- Integrated INS USBL positioning
- Proficient acoustic and laser subsea metrologies
- Dimensional control surveys
- BOEM final database submissions

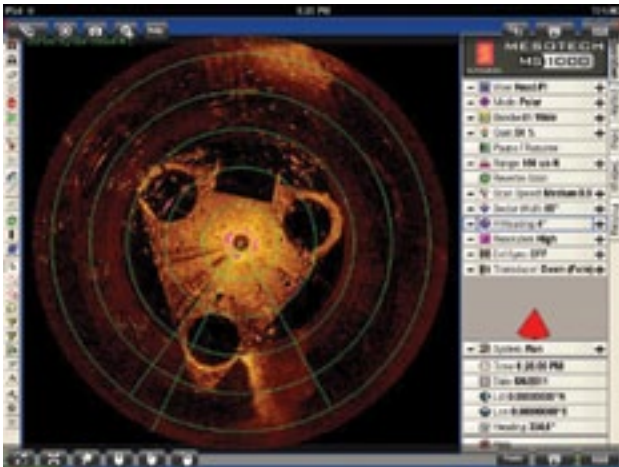
## CID Survey Database

Our interactive survey database, CID, places high-resolution seafloor imaging, bathymetry, pipeline, platform, reefing zones and more at our clients' fingertips.

CID features C-Survey-compiled data from a range of agencies including BOEM, NOAA, the US Coast Guard, US Geological Survey and Department of Interior, in diverse spatial formats converted for use in the oil and gas industry. Data can be rapidly extracted for use in any project

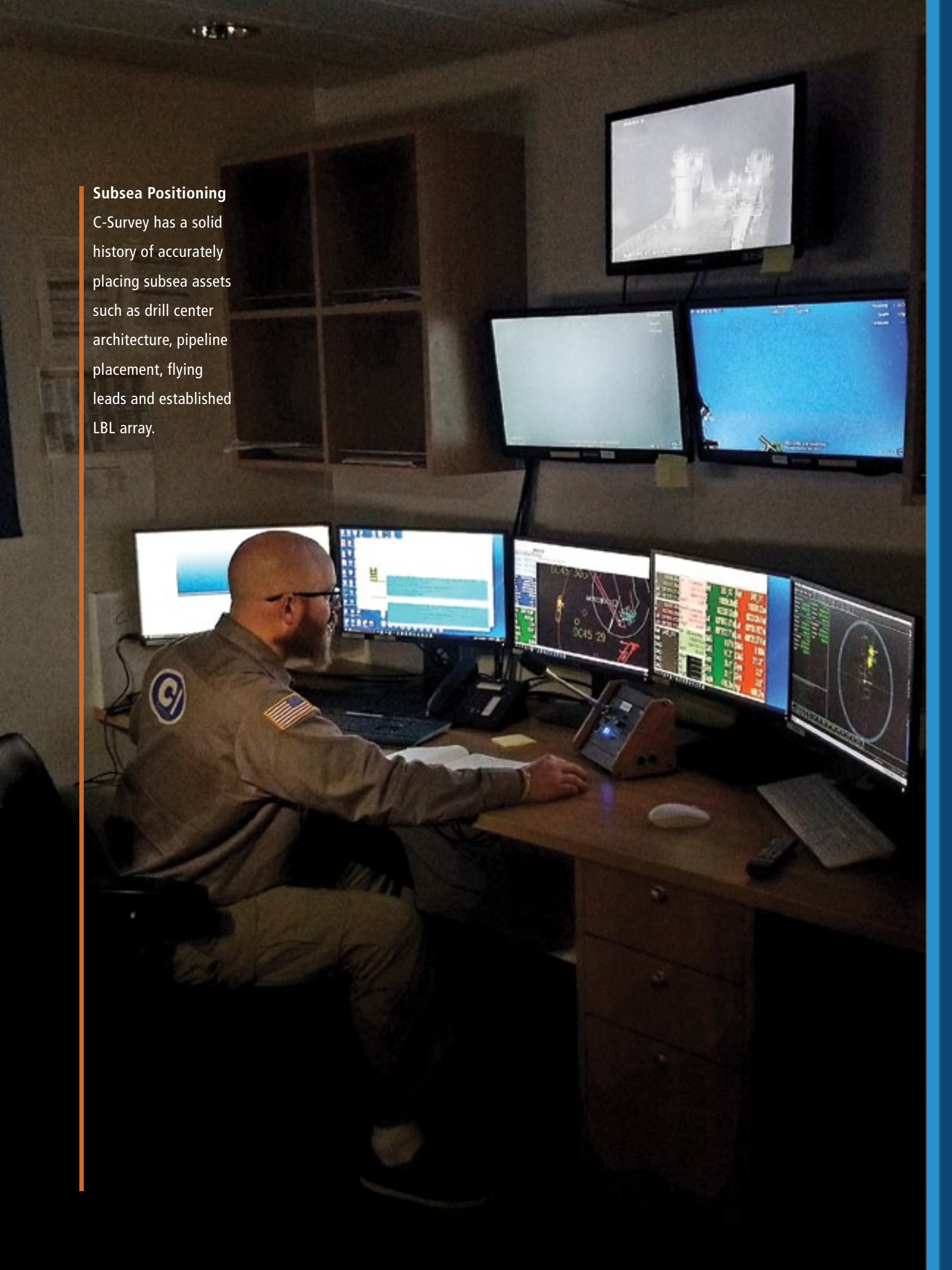
## Surface Navigation Positioning

Through the use of a mesh network, all vessels are equipped with an interactive navigation screen and can work simultaneously using one master survey navigational console.



### Subsea Positioning

C-Survey has a solid history of accurately placing subsea assets such as drill center architecture, pipeline placement, flying leads and established LBL array.



# I TOOLING SERVICES

C-Innovation boasts a range of dependable tooling services for subsea and specialized applications.

## Subsea Tooling

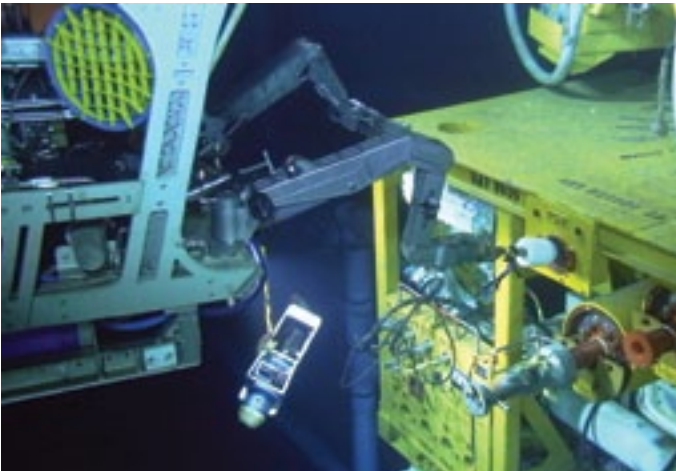
- Stingers
- Torque tools
- Torque verification
- Hardline cutters
- Cameras and accessories
- Probes
- Gauges
- Sonar
- ROV tools

## Specialized Tooling

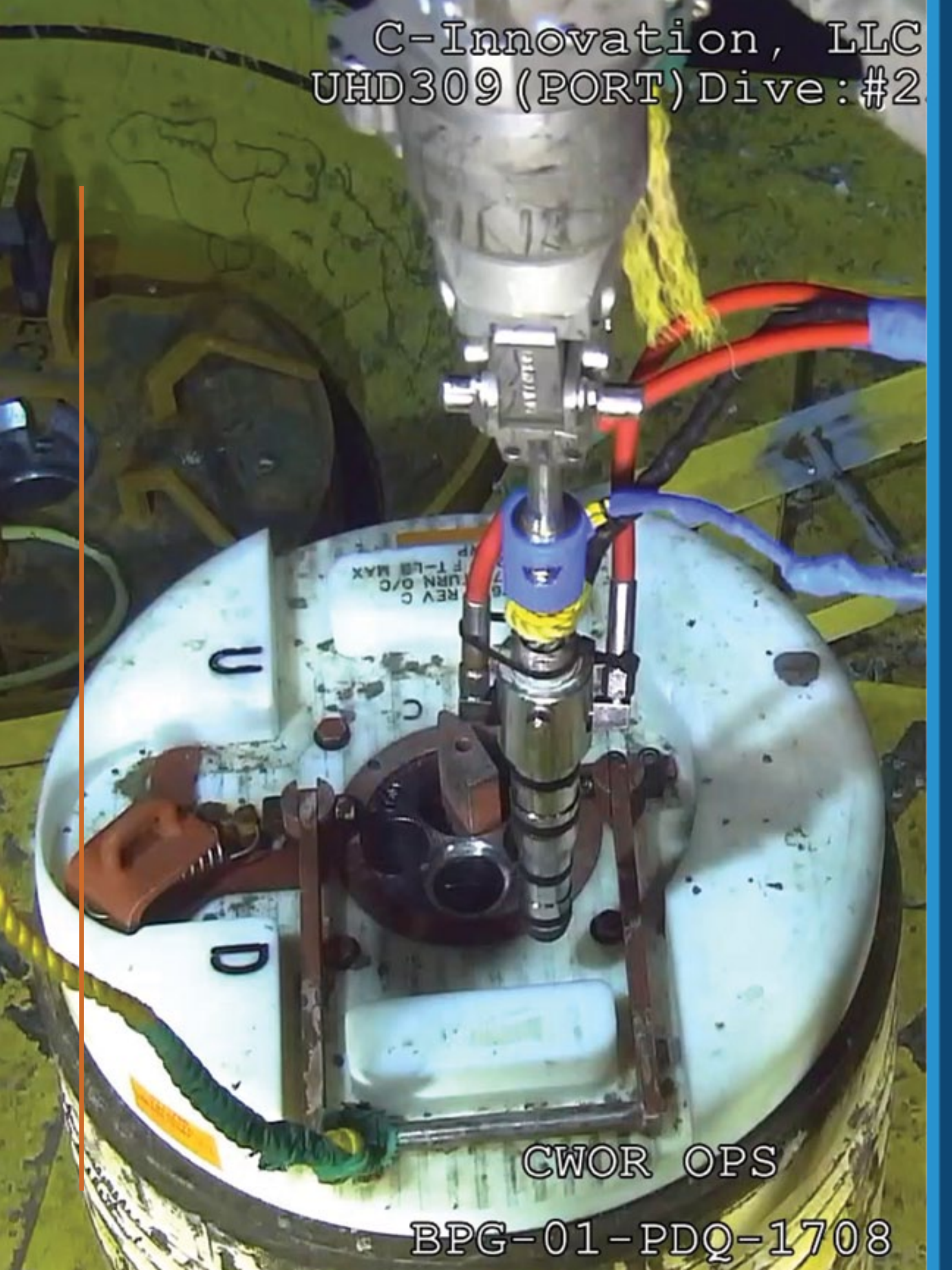
- Skids
- Backpacks
- HD and UHD tooling kits
- Custom engineering solutions

## Added Tooling Services

- UWILD
- Outland 1000 ROV
- SIT
- FAT
- Project management
- Pressure test services
- Tank testing
- Schilling test bed



C-Innovation, LLC  
UHD309 (PORT) Dive:#2



CWOR OPS

BPG-01-PDQ-1708

## I AUV SERVICES

From surveys and mapping to pipeline inspection, C-Innovation's AUV Services empower our clients to effectively see, plan and act in critical offshore operations.

### AUV applications include:

- Seafloor mapping for subsea infrastructure and construction
- Precise survey for positioning
- Pipelines and subsea completions
- Hazards surveys
- Pipelay surveys
- Inspections



### Kongsberg Maritime MUNIN

- Depth Rated: 1,500m
- Endurance: 24 hrs at 3 kts
- Operational Modes: Autonomous, Semi-autonomous, Supervised
- Pipe Tracking: KM Autonomous Capability
- Synthetic Aperture Sonar: KM HISAS 2040
- Multibeam Echosounder: KM EM2040
- Sub-bottom Profiler: EdgeTech DW 4-24 kHz
- Camera: CathX Ocean HD Color Camera



### Kongsberg Maritime HUGIN

- Depth Rated: 4,500m
- Endurance: 26 hrs at 3 kts
- Operational Modes: Autonomous, Semi-autonomous, Supervised
- Pipe Tracking: KM Autonomous Capability
- Synthetic Aperture Sonar: KM HISAS 1032
- Multibeam Echosounder: KM EM2040
- Sub-bottom Profiler: EdgeTech DW 1-6 kHz
- Camera/Laser Profiler: CathX Ocean HD Color Camera w/Laser Profiler
- Environmental/Geochemical Sensors: PAH, CO<sub>2</sub>, CH<sub>4</sub>, DO<sub>e</sub>

## OUR MISSION/OUR VISION

At C-Innovation, our mission is to provide unparalleled subsea solutions to the global energy industry, while safeguarding ethical work practices for the benefit of our employees, our customers and our environment.

Our vision is to be the global leader in integrated subsea solutions to the energy industry, by continuing the mission of engineering excellence, advanced product innovation and service integration.



www.c-innovation.com



## C-I Worldwide

### USA

#### Headquarters

1121 Decker Drive  
Mandeville, LA 70471  
(985) 612-1700

#### Sales

2000 W Sam Houston Pkwy S, Suite 1100  
Houston, TX 77042  
(832) 251-6665

### Brazil

#### Rio de Janeiro

Rua da Quitanda, 86 4º andar Sl. 401  
CEP 20091-005 Rio de Janeiro, RJ Centro  
+55 21 3970-9150

#### Macaé

Rua S-5, Lote 25-A,  
Quadra 2-4  
Novo Cavaleiros  
Macaé, RJ 27933-400

### Europe

Contact: Doug Walters  
985-612-1700 Ext. 52818  
985-237-8024 Cell  
doug.walters@c-innovation.com

