

M/V DINO CHOUEST

Multi-Purpose Light
Construction Vessel



M/V Dino Chouest

SPECIFICATIONS

REGISTRATION

Hull	348
Vessel Type	Anchor Handling Tug Supply Vessel
Year Built	2009

ACCOMMODATIONS

Accommodations	58
----------------	----

DIMENSIONS

Dimensions	348 ft. x 72 ft. x 31 ft. (106.07 m x 21.95 m x 9.45 m)
Design Draft	24 ft. 9 in. (7.54 m)
Clear Deck	183 ft. 6 in. x 56 ft. (55.93 m x 17.07 m)

SPECIAL FEATURES

Positioning	DP 2
Shark Jaws	Two (2) x 750 MT
Tow Pins	Two (2) x 300 MT
Tuggers	Two (2) x 17 Tons, Five (5) x 15 Tons
Ship Motion	Two (2) Passive Type Anti-Roll Tanks
Stern Rollers	Two (2) x 12 ft. dia. x 20 ft.
Cranes	One (1) x 2.5-Ton Capacity @ 68 ft. Radius, Knuckle Boom
Cranes	Two (2) x 10-Ton Capacity @ 45 ft. Radius, Fixed Boom
ROV	One (1) Schilling Robotics UHD 200HP 4000M System

C-INNOVATION • 985.612.1700 • WWW.C-INNOVATION.COM



M/V DINO CHOUEST

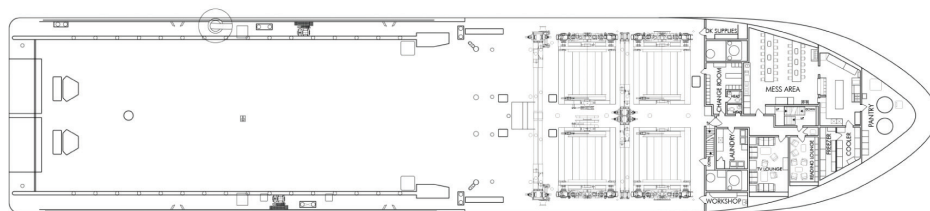
Multi-Purpose Light
Construction Vessel



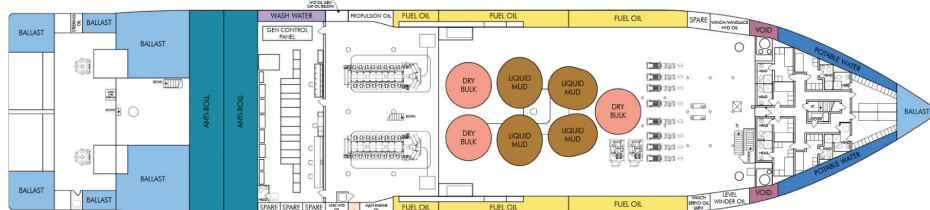
SCHEMATICS

Color Codes

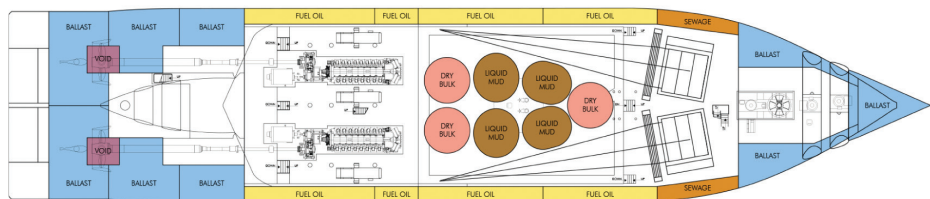
- Brine/Drill Water
- Ballast/Fresh Water
- Fuel Oil
- Liquid Mud
- Dry Bulk
- Anti-Roll
- Auxiliary
- Dirty Oil
- Fuel Oil Overflow
- Potable Water
- Sewage
- Void/Cofferdam
- Wash Water
- Liquid Mud Cleaning
- Methanol



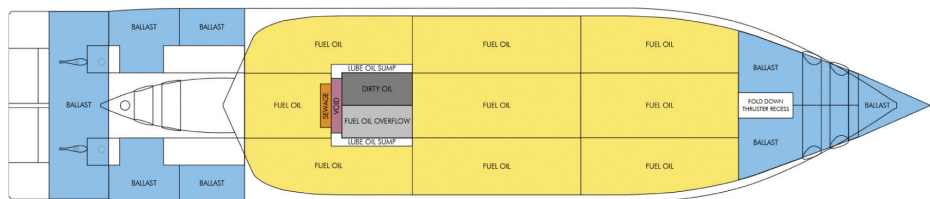
MAIN DECK



LOWER DECK



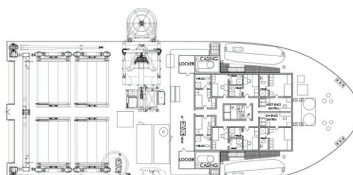
ABOVE TANK TOP



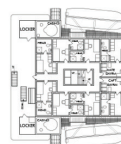
BELOW TANK TOP



DECK 1



DECK 2



DECK 3



DECK 4



DECK 5



DECK 6