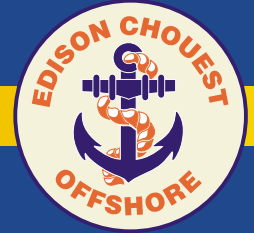


100

312' MULTI-PURPOSE Z-DRIVE PLATFORM SUPPLY VESSELS



M/V TIMBALIER ISLAND

EDISON CHOUEST OFFSHORE

M/V TIMBALIER ISLAND

Specifications 07/14

REGISTRATION: Hull #285

Vessel Type: Multi-Purpose Z-Drive Platform Supply Vessels

Year Built: 2014

U.S. MEASUREMENTS

METRIC EQUIVALENTS

	U.S. MEASUREMENTS	METRIC EQUIVALENTS
DIMENSIONS	312' X 66' X 26'	95.10 m X 20.12 m X 7.92 m
Draft (Lightship):	6.50'	1.98 m
Draft (Loadline):	21.38'	6.52 m
Clear Deck:	205' x 56.5'	62.5 m x 17.22 m
Clear Deck Area:	11,583 ft ²	1,076 m ²
Deck Cargo Capacity:	3,975 LT	4,040 MT
Deck Strength:	1,200 lb/ft ²	5,858 kg/m ²
Deadweight Tonnage:	5,946 LT	6,041 MT

CAPACITIES

Ship's Fuel Oil:	242,826 gallons	919.20 m ³
Ballast/Cargo Freshwater:	217,618 gallons	823.77 m ³
Cargo Freshwater:	531,405 gallons	2,011.59 m ³
Potable Water:	36,685 gallons	138.87 m ³
Dry Bulk:	14,450 ft ³ @ 80 psi	409.18 m ³ @ 5.5 bars
Liquid Mud:	21,668 barrels	3,444.94 m ³

MACHINERY

Main Propulsion:	Two (2) Schottel SCD 3030 Z-Drives (3,000 kW each) with 3,200 mm dia. 4-Blade FPP, VFD Controlled
Bow Thrusters:	One (1) Brunvoll AR-63-LNA-1650 VFD Controlled Drop Down (800 kW) Two (2) Brunvoll FU80 Tunnels (1,050 kW)
Speed:	13.7 knots
Generators:	Four (4) x 1,700 kW 3512C CATS, One (1) x 400 kW CAT C18 Emergency

SPECIAL FEATURES

Ship Motion:	One (1) Passive Type Anti-Roll Tank, Bilge Keels
Positioning:	DP-2
Firefighting:	Two (2) x 1,200 m ³ /hr Monitors, Water Spray System

ACCOMMODATIONS:	54 (Non-ILO MLC 2006)
	45 (ILO MLC 2006)

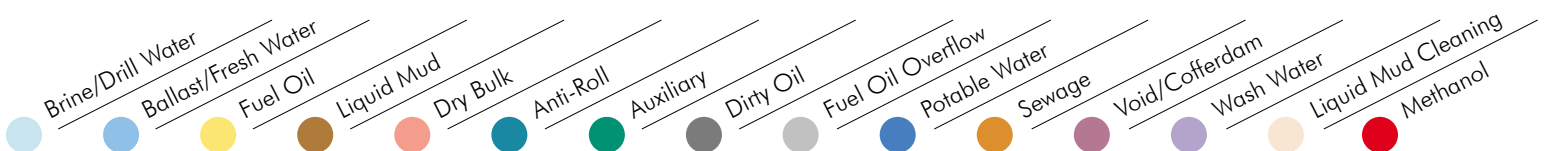
*Each bunk room features a private head.

LIFESAVING EQUIPMENT

Six (6) x 20-Man Inflatable Life Rafts
Two (2) x 25-Man Inflatable Life Rafts
One (1) x RSQ 450A Rescue Boat with Davit
Other gear as required by USCG/SOLAS

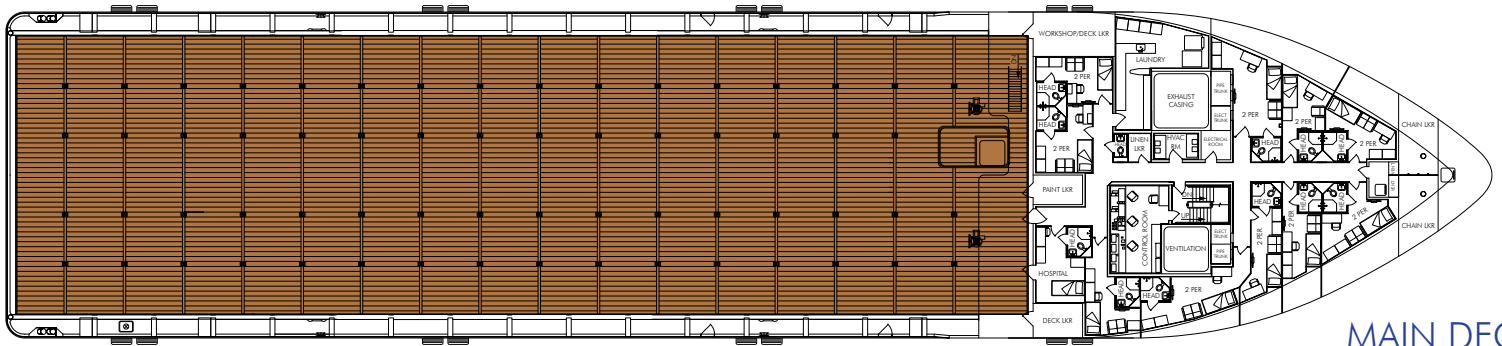
CLASSIFICATION

ABS	Maltese Cross A1 (Hull)
ABS	Maltese Cross AMS (Machinery)
ABS	Loadline
ABS	Maltese Cross Offshore Support Vessel (OSV)
ABS	Maltese Cross ACCU (Automation)
ABS	DPS-2
ABS	FiFi 1
ABS	Code of Safety for Special Purpose Ships (<i>Optional</i>)
ABS	Guide for Habitability on Workboats (<i>Optional</i>)
ABS	Protected Fuel Oil Tanks
ABS	Hazardous and Noxious Liquid Substances
	Maltese Cross OSV (HNLS)
ABS	ILO MLC 2006 Title 3 (MLC-ACCOM) (<i>Optional</i>)
USCG	Subchapter L (OSV) and I (Cargo)
USCG	i.a.w. Interpretation of MARPOL A.673 (16)
USCG	International Maritime Dangerous Goods Certificate (IMDG)
USCG	Authority to Store & Discharge Recovered Oil
	SOLAS, MARPOL

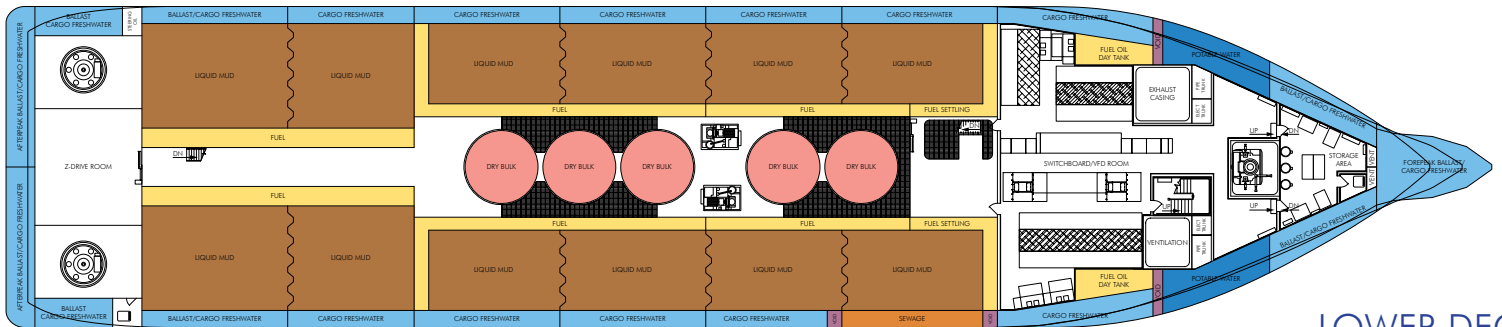


M/V TIMBALIER ISLAND

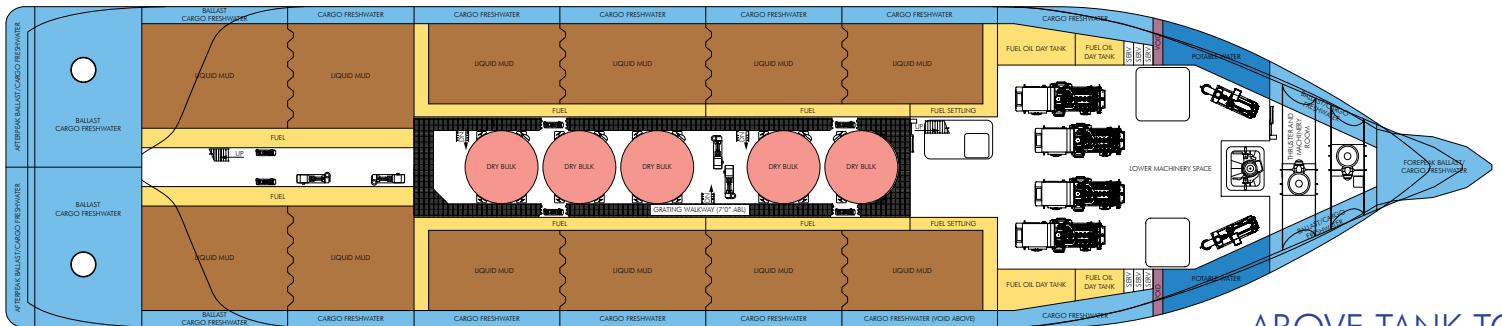
Schematics



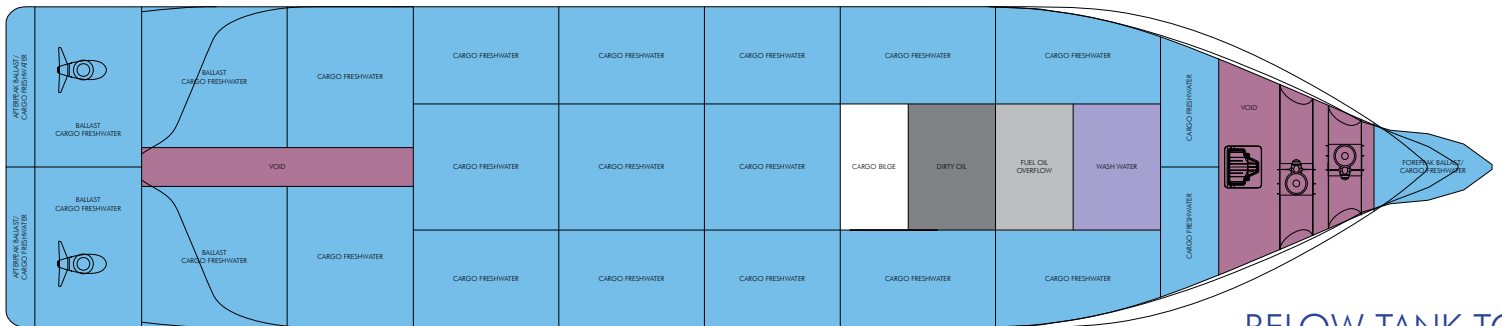
MAIN DECK



LOWER DECK



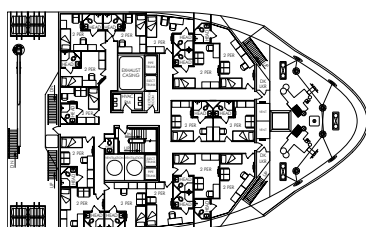
ABOVE TANK TOP



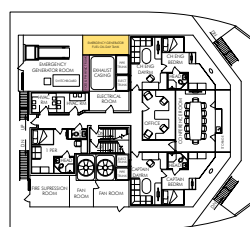
BELOW TANK TOP



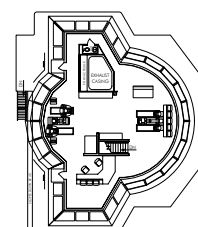
DECK 01



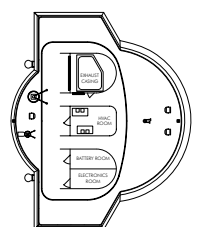
DECK 02



DECK 03

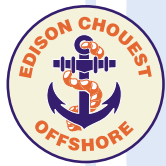


DECK 04



DECK 05

ECO



EDISON CHOUEST OFFSHORE

16201 East Main Street
Cut Off, LA 70345-3804

985-601-4444 Fax: 958-632-2282
www.chouest.com